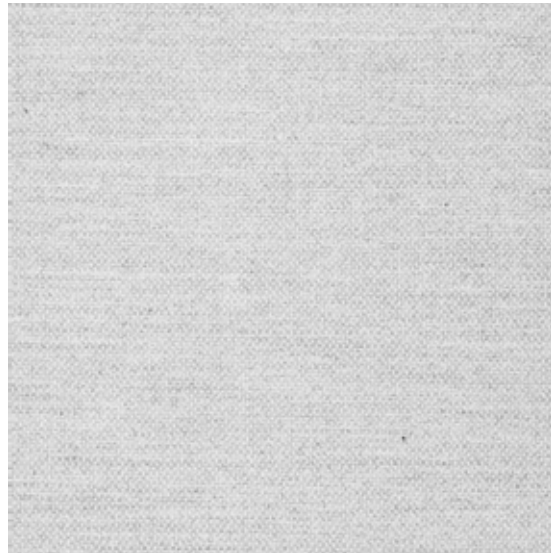


KUN
DESIGN
Living with Design



FABRIC

100% SOLUTION DYED ACRYLIC FABRIC



LIGHT GREY(SEF4002)

WATER AND STAIN REPELLENT/RESISTANT TO UV RAYS



LIGHT GREY(SEF4002)



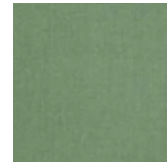
SAND (SEF4008)



DARK GREY(SEF4006)



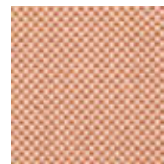
AQUAMARINE (SEF4005)



LEAF (SEF4004)



ORANGE (SEF4007)



ORANGE(DCF0120001)

FABRIC

100% POLYPROPYLENE

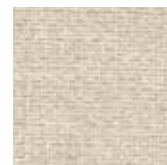


Fontelina 180

WATER AND STAIN REPELLENT/RESISTANT TO UV RAYS



Fontelina 180



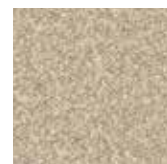
Woolacombe 140



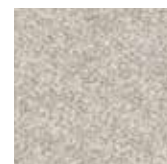
Fontelina 090



Volga C/164



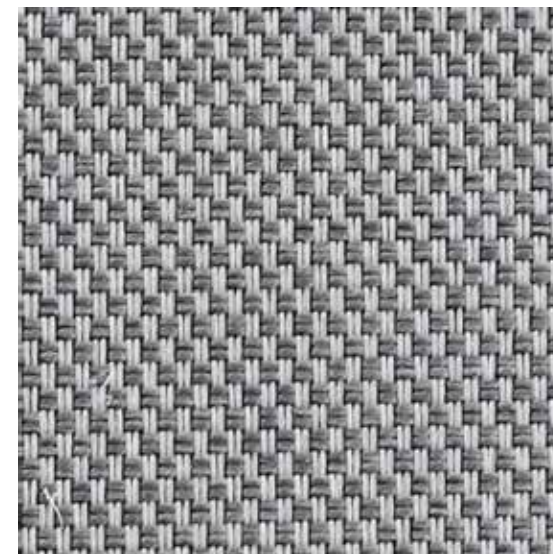
Jalousie C/140



Jalousie C/131

FABRIC

100% POLYPROPYLENE



VITA GRIS 51

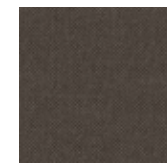
WATER AND STAIN REPELLENT/RESISTANT TO UV RAYS



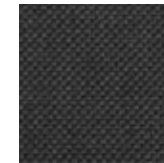
VITA LION 7



VITA GRIS 51



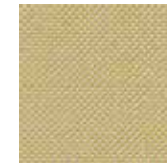
VITA 17



VITA MARENGO 53



VITA VERDE 30



VITA 19



VITA 32



VITA 43

FABRIC

100% SOLUTION DYED ACRYLIC FABRIC



CANVAS (5453)

WATER AND STAIN REPELLENT/RESISTANT TO UV RAYS



WHITE (5404)



CANVAS (5453)



TAUPE (5461)

ROPE

100% PVC



SAND(HF-006)

WATER AND STAIN REPELLENT/RESISTANT TO UV RAYS



ROPE for LOOP collection

100% PVC



HONEY (HF-021)

WATER AND STAIN REPELLENT/RESISTANT TO UV RAYS



KUNDESIGN Rope is a weaved Selected PVC fibre. The material has a soft surface that acts like a fabric. Avoid pulling/pushing the material too hard as this may cause it to lose its shape. This weatherproof material withstands changing weather conditions, is UV-resistant which makes it ideal for outdoor use. It is easy to maintain and can be cleaned with ordinary household cleaners.

FRAME

ALL OUR ALUMINIUM FURNITURE IS POWDER COATED



Powder coating serves as a protective layer that is tinted in a variety of colours. Aluminium furniture is ideal for use outdoors as well as indoors.

TOP

CERAMIC



CALACATA GOLD



TRAVERTINO ROMAN



JENNY GREY



BLACK



WHITE TRAVERTINO ROMAN



TRAVERTINO ROMANO-RED

TOP

CERAMIC



JK-11



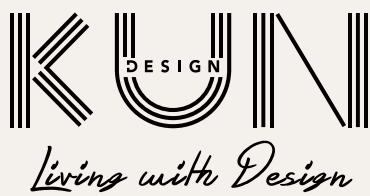
JK-4

TOP

WOOD



TEAK



www.kundesign.com
info@kundesign.com